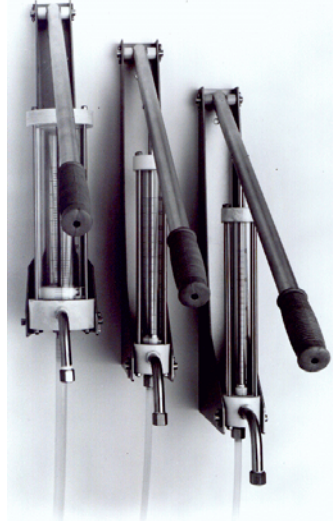


ES MANUFACTURING, INCORPORATED
ENGINEERED SOLUTIONS FOR
COMPOSITES MANUFACTURING
US/CANADA 800-55ES-MFG
727-323-4040 FAX 727-327-9872
E-MAIL: Sales@esmfg.com



IMPORTANT NOTICE:

Failure to return the warranty sheet with a copy of the original sales receipt, will void warranty.

SCD-025/SCD-100/SCD-500 SWIS PUMP
Catalyst Dispensers
Documentation & Warranty Packet

Thank you for purchasing the world's favorite wall mounted *SWISPUMP Catalyst Dispensers*. If properly maintained, this *SCD-025/SCD-100/SCD-500* will provide years of trouble free service.

WARRANTY

This model *SCD-025/SCD-100/SCD-500* is warranted against defects for a period of 60 days. Keep your original sales receipt for proof of purchase. ES Mfg., Inc. will replace or repair any defective part, either directly, or through the distributor, at the option of ES Mfg. ES Mfg. Reserves the right to inspect the merchandise at our facility, and is not responsible for transportation cost to ES Mfg. ES Mfg. Is not responsible for damage, loss, lost production or any other expenses due to the failure of this product. No other warranty is expressed or implied.

Copyright 2007 ®
ES Manufacturing, Inc.
2647 24th Street North
St. Petersburg, FL 33713
US / Canada: 800-55ES-MFG
Local / International: 727-323-4040
Fax: 727-327-9872
Email: Sales@esmfg.com

Swispumps



Contents:

1. Wall Mounted Pump.
2. 5 Ft. Material Hose.

Instructions:

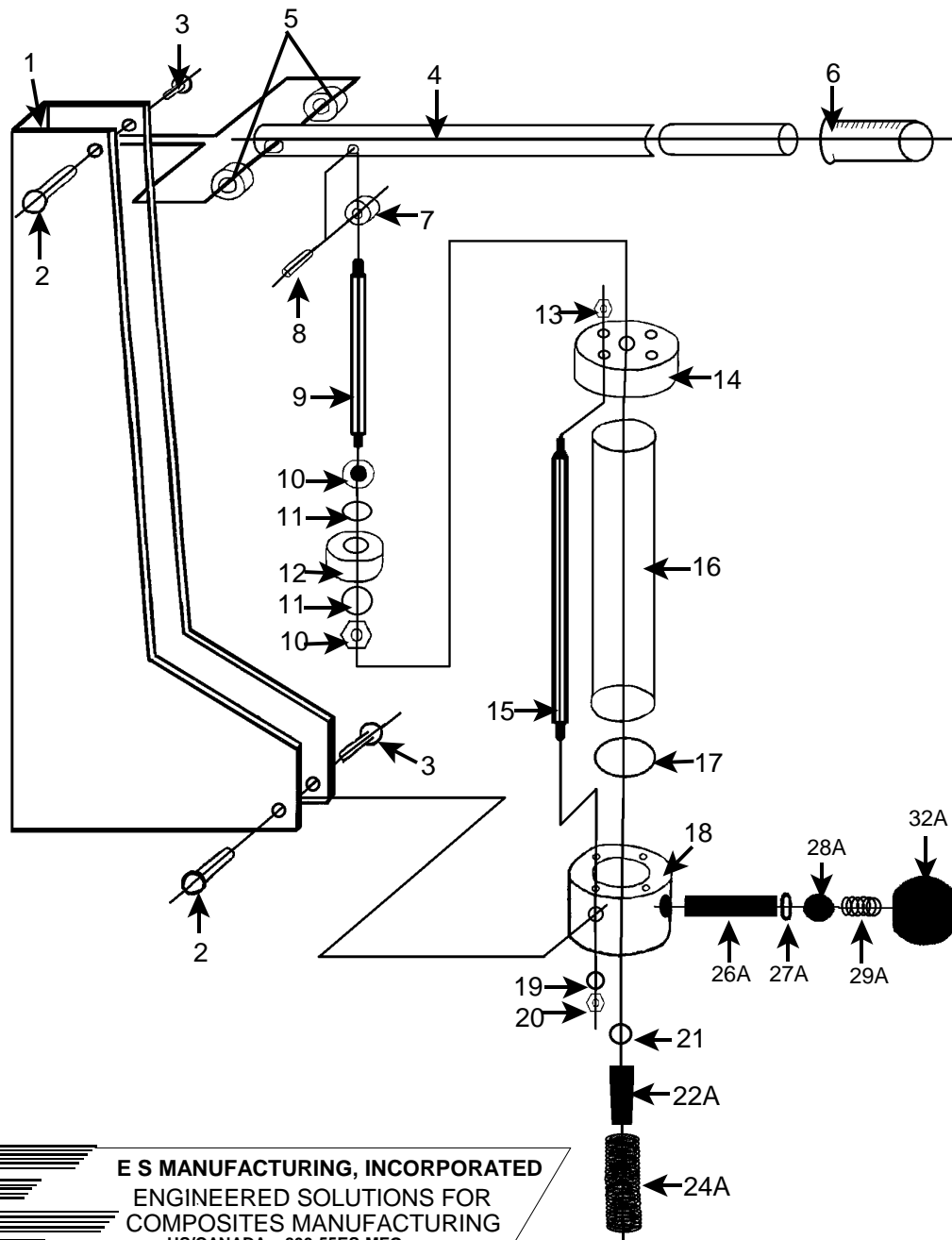
1. Inspect all the fittings, screws, and nuts before mounting.
2. Find a suitable or permanent location to mount your SWISPUMP.
3. Insert the material hose into the barb underneath the pump and make sure is tight.
4. Place underneath the pump the catalyst container you wish to use. Insert the material hose inside the container and begin to pump.

Instrucciones: (Spanish)

1. Este seguro que todos los tornillos, tuercas y juntas estén bien apretadas.
2. Encuentre un lugar adecuado y permanente para montar la bomba.
3. Inserte la manga para el material en la junta debajo de la bomba.
4. Coloque el recipiente del catalizador debajo de la bomba, y inserte la manga adentro.

If you have any questions regarding the use of other materials, please feel free to contact us at
800-553-7634.

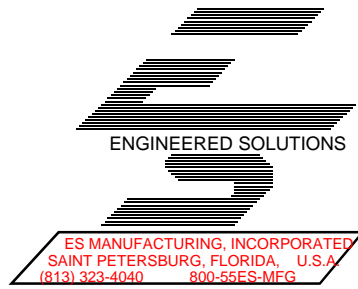
25, 100 & 500cc SWISPUMP DIAGRAM



- | | | |
|-------|--------------|-------------------------------------|
| (1) | SCD-001-100 | Steel Bracket (100CC &500CC) |
| (2) | SCD-002-100 | Steel Bracket Shaft |
| (3) | SCD-003-100 | Steel Bracket Shaft Screws |
| (4) | SCD-004-100 | Catalyst Pump Arm |
| (5) | SCD-005-100 | Plastic Bushing |
| (6) | SCD-006-100 | Catalyst Pump Grip |
| (7) | SCD-007-100 | Aluminum Handle Bushing |
| (8) | SCD-008-100 | Handle Shaft |
| (9) | SCD-009-100 | 100 & 500CC Mea. Cylinder Shaft |
| (10) | SCD-010-100 | 100& 500CC Mea. Cyl. Shaft Nut |
| (11) | SCD-011-025 | 025 CC Suction Plug O' Ring |
| (11) | SCD-011-100 | 100CC Suction Plug O'Ring |
| (11) | SCD-011-500 | 500CC Suction Plug O'Ring |
| (12) | SCD-012-100 | 100CC Suction Plug |
| (12) | SCD-012-025 | 25CC Suction Plug |
| (12) | SCD-012-500 | 500CC Suction Plug |
| (13) | SCD-013-100 | Connecting Shaft Upper Nut |
| (14) | SCD-014-025 | Upper Cylinder Housing 25CC |
| (14) | SCD-014-100 | Upper Cylinder Housing 100CC |
| (14) | SCD-014-500 | Upper Cylinder Housing 500CC |
| (15) | SCD-015-100 | Housing Connecting Shaft |
| (16) | SCD-016-100 | 100CC Measuring Glass Cylinder |
| (16) | SCD-016-500 | 500CC Measuring Glass Cylinder |
| (17) | SCD-017-025 | Glass Cylinder O'Ring (25CC) |
| (17) | SCD-017-100 | Glass Cylinder O'Ring (100CC) |
| (17) | SCD-017-500 | Glass Cylinder O'Ring (500CC) |
| (18) | SCD-018-025 | Lower Cylinder Housing (25CC) |
| (18) | SCD-018-100 | Lower Cylinder Housing (100CC) |
| (18) | SCD-018-500 | Lower Cylinder Housing (500CC) |
| (19) | SCD-019-100 | Connecting Shaft Washer |
| (20) | SCD-020-100 | Connecting Shaft Nut |
| (21) | SCD-021-100 | Intake Ball Bearing (25 & 100CC) |
| (21) | SCD-021-500 | Intake Ball Bearing (500CC) |
| (22A) | SCD-022A-100 | 100CC &25CC Barb |
| (22A) | SCD-022A-500 | 500CC Barb |
| (24A) | SCD-024A-100 | Hose for 25 & 100CC |
| (24A) | SCD-024A-500 | Hose for 500CC |
| (26A) | SCD-026A-100 | Material Shaft 25/100CC |
| (26A) | SCD-026A-500 | Material Shaft 500CC |
| (27A) | SCD-027A-100 | Material Shaft O'Ring (25 & 100CC) |
| (27A) | SCD-027A-500 | Material Shaft O'Ring (500CC) |
| (28A) | SCD-028A-100 | Mat. Shaft Ball Bearing (25& 100CC) |
| (28A) | SCD-028A-500 | Material Shaft Ball Bearing |
| (29A) | SCD-029A-100 | Material Shaft Spring (25 & 100CC) |
| (29A) | SCD-029A-500 | Material Shaft Spring (500CC) |
| (32A) | SCD-032A-100 | Mat.Shaft Fluid Nozzle (25& 100CC) |
| (32A) | SCD-032A-500 | Material Shaft Fluid Nozzle (500CC) |

E S MANUFACTURING, INCORPORATED
 ENGINEERED SOLUTIONS FOR
 COMPOSITES MANUFACTURING
 US/CANADA 800-55ES-MFG
 727-323-4040 FAX 727-327-9872
 E-MAIL: sales@esmfg.com

Please take a few
Minutes to fill out
the below warranty
sheet. It will help
us serve you better.



ES MANUFACTURING, INC.
PO BOX 11692
ST. PETERSBURG, FL 33733- 1692 USA

Thomas D. Elder
President, ES Manufacturing, Inc.

Check out our website at
esmfg.com!

FOLD HERE

If you have pictures of the products you make, we would like to display them at our domestic and international trade shows.

Date of Purchase: _____

Company Name: _____

Street Address: _____

City / State / Zip: _____

Phone#: _____ Fax #: _____

Contact: _____

Primary Line of Business: _____

Is this your first ES Mfg., Inc. purchase? Yes No

Who did you purchase this unit from?: _____

What was your purchase price?: _____

Which was more important in your purchase?:

Simplicity Effectiveness Price Reputation

Would you like a free catalog?: Yes No

Comments: _____

Please return this sheet in the enclosed envelope.